

Abjen

Trusted LED Supplier



N Plus Series

N1.8 Plus/N2 Plus/N3 Plus/N4 Plus/N4D Plus/N5 Plus

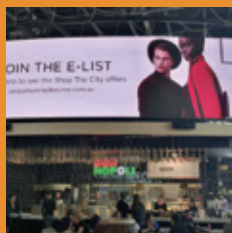
N Plus Series

N1.8 Plus/N2 Plus/N3 Plus/N4 Plus/N4D Plus/N5 Plus

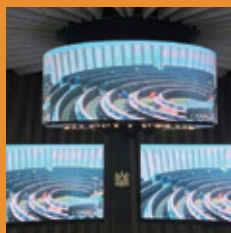
■ Application



Retail Shops



Shopping Malls



Lobbies



House of Worship



Transportation

■ Flat panel

- Excellent visual performance
- Fast configuration of 3/4/5 modules
- Light and slim design

■ Smart monitoring

- Smart modules
- Panel working status monitoring

■ Front/Rear maintenance

- Magnetic modules
- Front & rear installation
- Front & rear maintenance

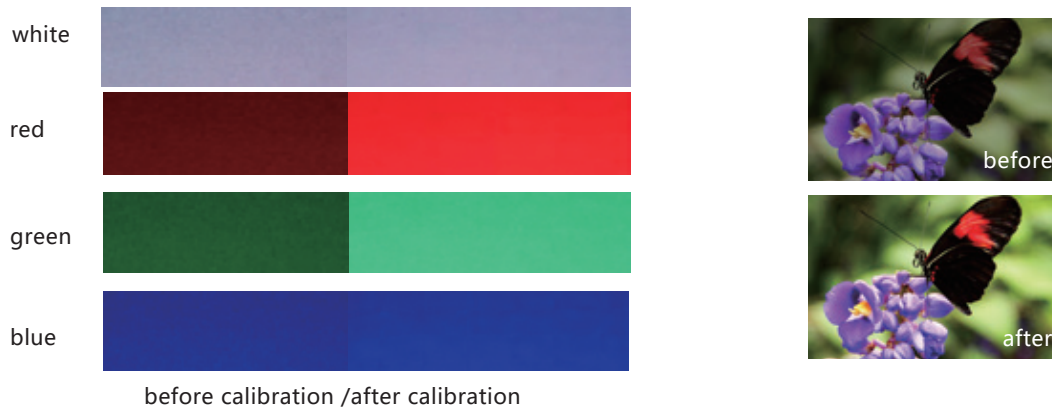


Flat panel

- Excellent visual performance
- Fast configuration of 3/4/5 modules
- Light and slim design

Flat panel

- Excellent visual performance



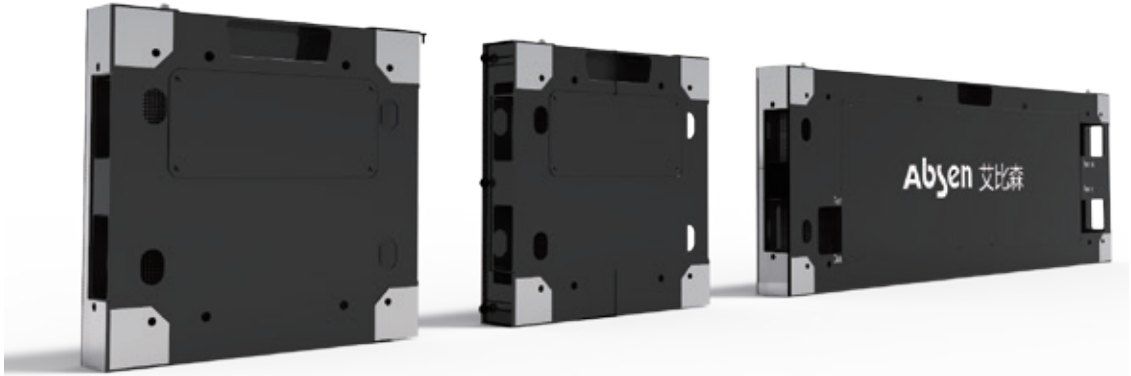
- A5C+ Pixel to pixel calibration technology ensure smooth color and excellent image quality
- Modules have calibration data storage function; data will be read automatically when modules are replaced



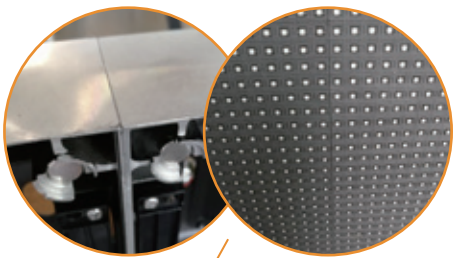
Clear textures in shadows



Lost details in shadows



- **Fast configuration of 3/4/5 modules**
- **Die-cast + CNC precision finishing craft**
 - Flat
 - Slim (54mm only)
 - High accuracy (tolerance $\leq 0.1\text{mm}$)



- **3+1+1 high accuracy**
 - Flat, no white or dark lines



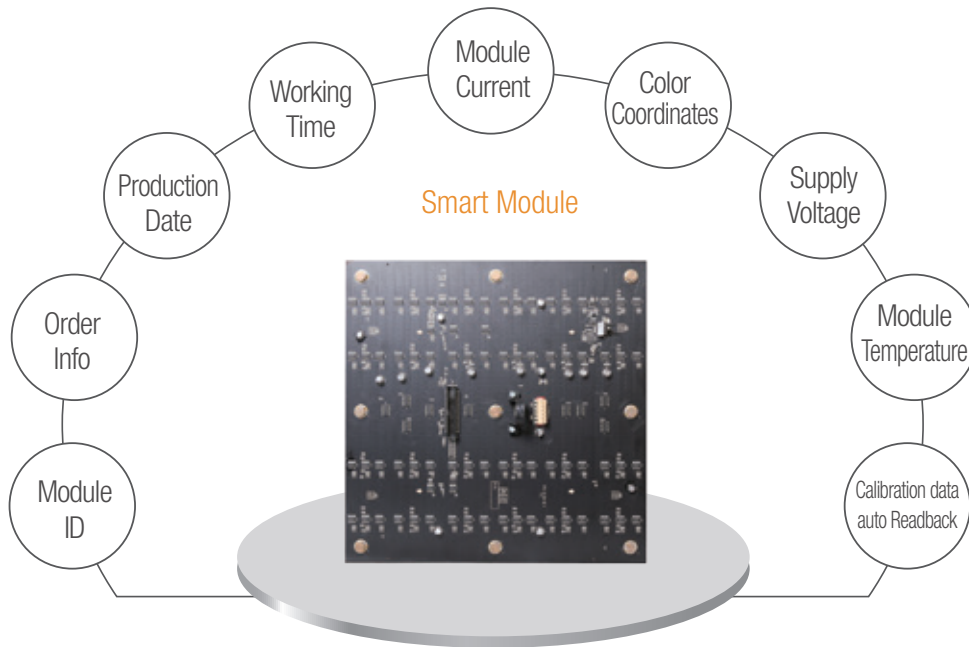


Smart monitoring

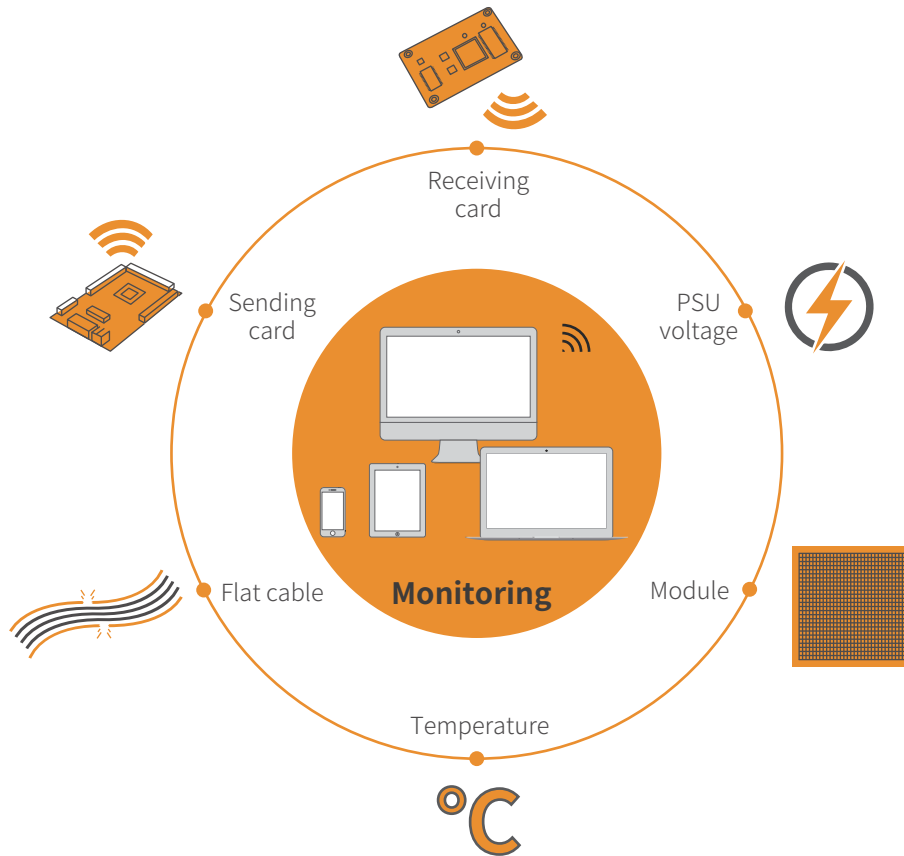
- Smart modules
- Panel working status monitoring



Smart monitoring



- ID number, order info, production date, working time, module current, color coordinates, supply voltage, module temperature will be loaded into each module, easy to trace.



- **No monitor cards and cables, support different smart terminals to monitor the display, real time monitoring the working status, any failure will be sent to Email**



No
Monitoring Card



PC
Monitoring



Mobile
Monitoring



Diagnostic Report
to Email

Get the amazing iPhone 7

Enjoy data free streaming on selected plans and

Front/Rear maintenance

- Magnetic modules
- Front & rear installation
- Front & rear maintenance

OPTUS

All for use in Australia. Full Optus Policy applies. Streaming SD unless specified. Streaming services subject to change at any time. Content not available in all regions.



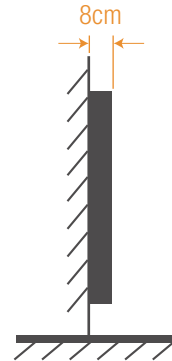
iPhone 7

Front/Rear maintenance

- N Plus series is installed within the thickness of 8 cm, saving installation space.
- Front and rear installation & servicing available, convenient and suitable everywhere.
- With mounting kit, front and rear mounting, easy and convenient.



4 in 1 mounting kit

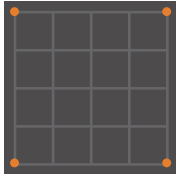


Mounted installation,
only 8 cm thickness



- When we rotate the cabinet at 90° , we need to rotate the module at 90° in the opposite direction to avoid color cast.

- Star connection of both power and data input, one module failed, others still keep working.
- External testing button and index lamp, easy to check the working status.



Magnet module



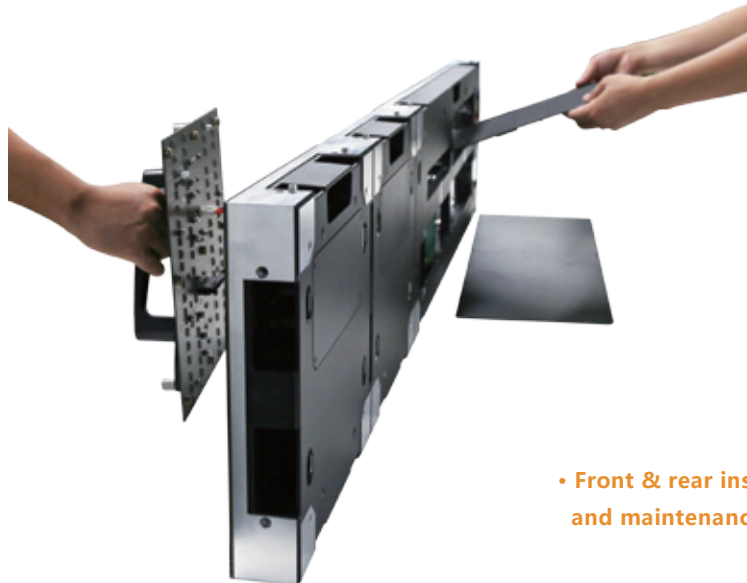
Noise-free



Module servicing



External testing button
and index lamp



- **Front & rear installation
and maintenance**

Basic Product Information

	N1.8 Plus	N2 Plus	N3 Plus	N4 Plus	N4D Plus	N5 Plus
Pitch (mm)	1.8	2.4	3.2	4	4	5.14
LED Type	Black SMD1515		Black SMD2121		SMD1921	Black SMD2121
Module Size (W*H, mm)	288*288	288*288	288*288	288*288	288*288	288*288
Panel Dimensions (W*H*D, mm)	864*288*54	864*288*54	1440*288*54	1440*288*54	1440*288*54	1440*288*54
Pixel Per Panel (pixels)	456*152	360*120	450*90	360*72	360*72	280*56
Cabinet Material	Die Casting Aluminum					
Brightness (nits)	800	800	800	800	2500	800
Power Consumption (Max./Avg.)(W/m ²)	540/180	540/180	420/140	434/145	300/100	395/130
Operaing Voltage (V)	100-240	100~240	100~240	100~240	100~240	100~240
Refresh Rate (Hz)	1920	3840	3840	3840	1920	3840
Gray Scale (bit)	14	14	14	14	14	14
Viewing Angle (H/V)	140°/120°	140°/120°	160°/140°	160°/140°	160°/140°	160°/140°
IP Rating (Front/Rear)	IP40/IP21	IP40/IP21	IP40/IP21	IP40/IP21	IP40/IP21	IP40/IP21
Maintenance Methods	Front/Rear Maintenance					

★ Shenzhen Absen Optoelectronic Co., Ltd. reserves the right to modify product design, specifications, and parameters without further notice.
Photos are used for illustration purpose only as products may differ from these photos. All rights reserved by Shenzhen Absen Optoelectronic Co., Ltd.

Absen Optoelectronic Co.,Ltd

18-20F Building 3A, Cloud Park, Bantian Huawei Base,
Longgang District Shenzhen, 518129, P.R.China
T: +86-755-89747399 E: absen@absen.com
F: +86-755-89747599 W: www.absen.com

Absen Inc.

7120 Lake Ellenor Drive, Orlando,
Florida 32809, USA
T: +1-407-203-8870 E: info@usabsen.com
F: +1-407-203-8873 W: www.usabsen.com

Absen GmbH

Eisenstraße 5, 65428 Rüsselsheim a.M.,
Germany
T: +49 (0) 6142 78935-0 E: europe@absen.com
F: +49 (0) 6142 78935-29 W: www.absen-europe.com